



FortiExtender 101F

QuickStart Guide



April 03, 2025

Copyright © 2021 Fortinet, Inc. All rights reserved. Fortinet®, FortiGate®, FortiCare® and FortiGuard®, and certain other marks are registered trademarks of Fortinet, Inc., in the U.S. and other jurisdictions, and other Fortinet names herein may also be registered and/or common law trademarks of Fortinet. All other product or company names may be trademarks of their respective owners. Performance and other metrics contained herein were attained in internal lab tests under ideal conditions, and actual performance and other results may vary. Network variables, different network environments and other conditions may affect performance results. Nothing herein represents any binding commitment by Fortinet, and Fortinet disclaims all warranties, whether express or implied, except to the extent Fortinet enters a binding written contract, signed by Fortinet's General Counsel, with a purchaser that expressly warrants that the identified product will perform according to certain expressly-identified performance metrics and, in such event, only the specific performance metrics expressly identified in such binding written contract shall be binding on Fortinet. For absolute clarity, any such warranty will be limited to performance in the same ideal conditions as in Fortinet's internal lab tests. In no event does Fortinet make any commitment related to future deliverables, features or development, and circumstances may change such that any forward-looking statements herein are not accurate. Fortinet disclaims in full any covenants, representations, and guarantees pursuant hereto, whether express or implied. Fortinet reserves the right to change, modify, transfer, or otherwise revise this publication without notice, and the most current version of the publication shall be applicable.

Register for Support

Register your Fortinet product to receive:

- Technical Support
- New product features
- Protection from new threats

Vous devez enregistrer le produit pour recevoir:

- Support technique
- Nouvelles fonctionnalités du produit
- Protection contre de nouvelles menaces

La reistrazione ti permette di usufruire di:

- Supporto Tecnico
- Nuove funzionalità
- Protezione dalle ultime minacce

Debe registrar el producto para recibir:

- Apoyo técnico
- Nuevas funcionalidades del producto
- Protección contra ataques

登録のお願い

本日、フォーティネット製品の登録をしてください。

登録すると次のメリットがあります。

テクニカルサポート・新機能の追加・新しい脅威への防御

请马上注册

您的飞塔产品

您在注册以后才能得到技术支持、新产品特点信息、最新威胁防护

<https://support.fortinet.com>

Toll free: 1 866 648 4638

Phone: 1 408 486 7899

Fax: 1 408 235 7737

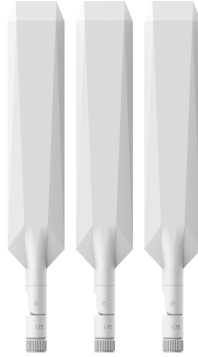
Email: register@fortinet.com

Packing List

FortiExtender 101F



LTE/GNSS All-in-One Antennas



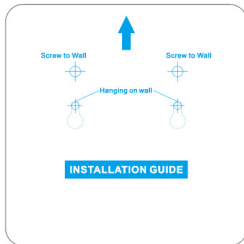
Mounting Kit



Anchors and Screws

Rubber Feet

QuickStart Guide



Drill Template Sticker

Product Description

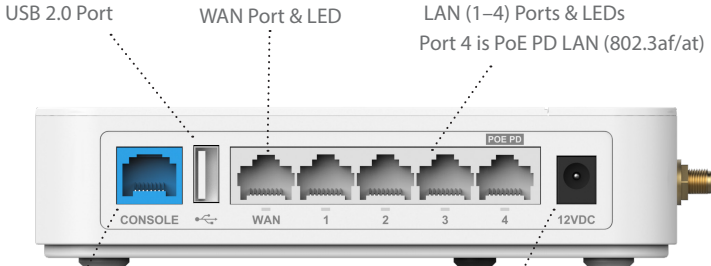
FortiExtender 101F is a wireless Internet WAN connection device featuring one 1-Gb/100-Mb WAN connection and four 1-Gb/100-Mb LAN connections.

Model	Modem
FEX-101F	Quectel CAT6 EM06-A (NA)/ Quectel CAT6 EM06-E (EU)

Notes:

- LTE CAT6 module (300 Mbps downlink and 50 Mbps uplink. Region: EM06-A for North American; EM06-E for EU/Brazil/APAC).
- FEX-101F only supports MicroSIM (3FF) SIM cards, which are not included. You must purchase your own SIM cards.

Ports & LED



Console Port
Note: To access the device from its console port, you must set the baud rate to 115200.

12VDC/2A Input (optional)
(Use 12VDC/2A power adapter with ID 2.1 mm plug.)

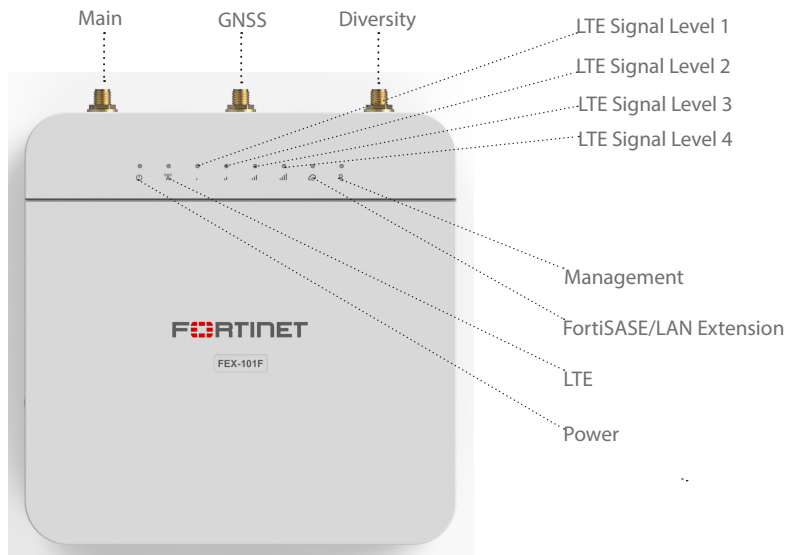
LED	Behavior and Description
WAN Port LED	<ul style="list-style-type: none">Green Steady: 1-Gb network connected.Green Flashing: 1-Gb network activity.Amber Steady: 100-Mb network connected.Amber Flashing: 100-Mb network activity.Off: No network connection.
LAN Port LEDs	<ul style="list-style-type: none">Green Steady: 1-Gb network connected.Green Flashing: 1-Gb network activity.Amber Steady: 100-Mb network connected.Amber Flashing: 100-Mb network activity.Off: No network connection.

SIM Card Bay & Reset/Default Button

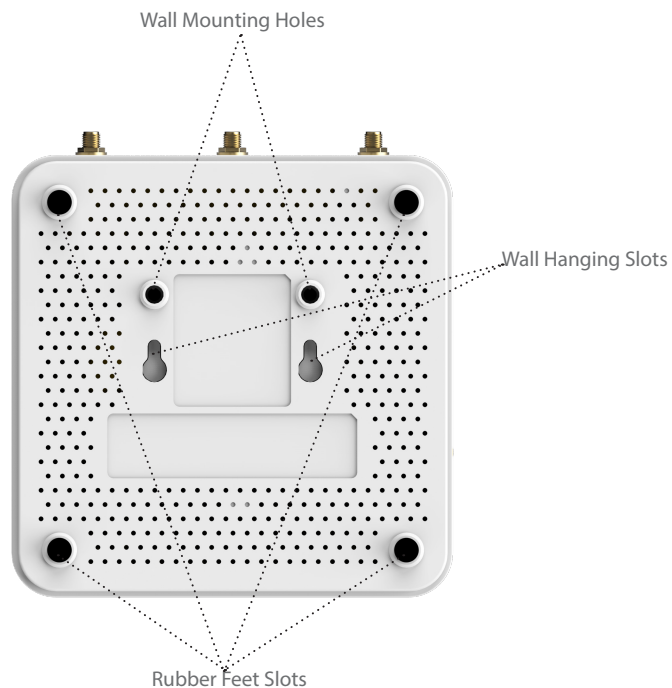


Button	Operating Instructions
Reset/Default Button	<ul style="list-style-type: none">Press and hold for less than 5 seconds: Reset/Reboot the device.Press and hold for more than 5 seconds: Restore the device to its factory default settings.

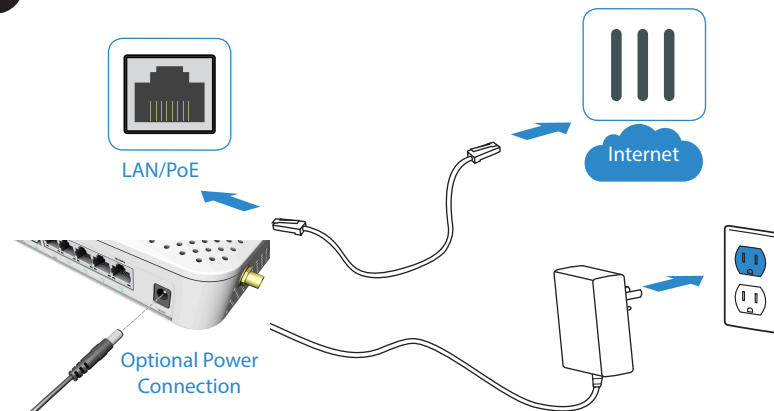
RF Connectors & System LEDs



LED	Description
Power	<ul style="list-style-type: none"> Green Steady: System has booted up and is working properly. Green Flashing: System is booting up. Amber: System is in error state. OFF: System is powered off.
LTE	<ul style="list-style-type: none"> Green Steady: Modem is connected to wireless carrier and is working properly. Green Flashing: Modem is booting up and is connecting to wireless carrier. Green Flashing Rapidly: System is in error state. OFF: Modem is powered off or no LTE connection.
Management	<ul style="list-style-type: none"> Blue Steady: System is managed by FortiGate or FortiExtender Cloud. Blue Flashing: System is connecting to a management device. OFF: System is not connected to any FortiGate device.
FortiSASE/LAN Extension	<ul style="list-style-type: none"> Blue Steady: System is connected to FortiSASE/LAN Extension. Blue Flashing (at one-second intervals): System is connecting to FortiSASE/LAN Extension. Blue Flashing Rapidly (at less-than-one-second intervals): System is experiencing an error in connecting to FortiSASE/LAN Extension. OFF: System is not configured for FortiSASE/LAN Extension.
LTE Signal Strength LEDs	<ul style="list-style-type: none"> 1 On: < 25%. 1 & 2 On : 25% - 50%. 1, 2 & 3 On: 50% - 75%. 1, 2, 3, & 4 On: > 75%.



1 Basic Connections



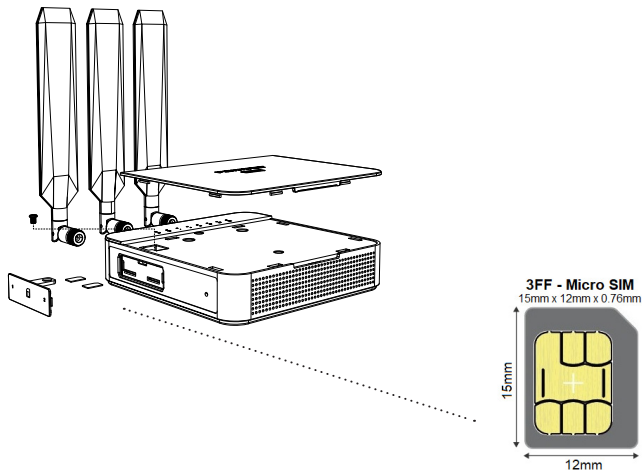
1. Insert one end of an Ethernet cable into the LAN 4/PoE PD port on the device.
2. Insert the other end of the Ethernet cable into the PoE LAN port of your FortiGate appliance, or to a WAN port of your FortiGate through a power injector. Ensure that the FortiGate interface provides DHCP server service to issue an IP address to FortiExtender when connected to LAN Port 4 of FortiExtender.
3. Optionally, if you are not using PoE, connect the device to a power outlet using a power adapter.

Warning:

You must provide adequate grounding to the PoE injector of the FortiExtender unit, if required, in compliance with your local electrical code or regulations. This device complies with IEEE 802.3af/at PoE specification. Do not use a PoE injector that is not IEEE 802.3af/at compliant as it might damage your device.

2 Assembly

1. Remove the front cover of the FortiExtender that bears the Fortinet logo and the FEX-101F model number by prying it off with a flat-head screwdriver.
2. Using a Phillips head screwdriver, remove the screw that holds the SIM dust cover in place.
3. Remove the dust cover that protects the SIM sockets by gently prying it from the device.
4. Insert your MicroSIM (3FF) SIM card(s) into the SIM socket(s). Observe the following guidelines:
 - If installing one SIM card, you can insert the card into either SIM socket.
 - If installing two SIM cards, use SIM1 as the primary socket and SIM2 as the secondary.
5. Insert the SIM card(s) into the SIM socket(s), making sure that the card is facing down with the cut corner on the left. (Note: Press the card again to remove it, if necessary.)
6. Replace the SIM sockets dust cover and tighten the dust cover screw.
7. Replace the front cover, and then attach the antennas.



3 IP Configuration

After you have connected the FortiExtender network interfaces, the device automatically attempts to obtain an IP address from a DHCP server. If you do not use DHCP, you can configure a static IP address.

To configure a static IP address:

1. Use an Ethernet cable to connect one of the LAN ports to the Ethernet port of your computer.
2. Set the computer Ethernet port to DHCP mode, and connect it to port1, port2, or port3.
3. Open your web browser and point to the default FortiExtender web GUI address: <http://192.168.200.99>
4. In both the username and password fields, type **admin** and press the Enter key on your keyboard. (**Note:** If you are logging in to the device for the first time, you will be prompted to change the default password. We strongly recommend that you change the password right away.)
5. Go to Networking>Interface, where you'll see all the system interfaces.
6. Select a desired interface, set it to "static" mode, configure the static IP address, and click Save.

4 Installation

The FortiExtender device is designed for placement near a window (desk or wall mount) to achieve the best LTE signal strength. Refer to the diagram below for proper placement and mounting.



Place on top of a desk or flat surface

1. Attach the rubber feet to the four corners on the bottom of the unit.
2. Place the unit on the desk or flat surface.
3. Secure the unit in place with a Kensington lock.
4. Attach the antennas.

Hang on a wall

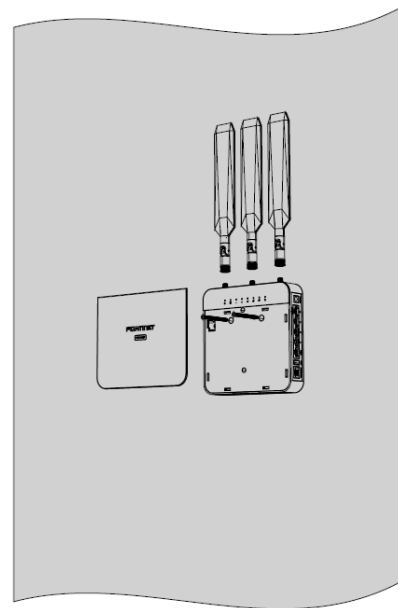
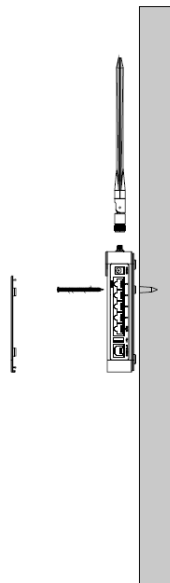
1. Peel off the drill template sticker, and stick it onto the wall in a desired location.
2. Use the template to mark and drill the pilot holes.
3. Insert the anchors into the holes.
4. Insert the screws into the anchors and tighten, leaving around a 5-mm gap between the screw head and the wall.
5. Position the device so that the mounting holes line up with the screws.
6. Place the mounting slots over the screws and slide the device down until the screws fit into the slots.

Tip:

Use bear claw screws. The screw heads of bear claw screws have a built-in gap that fits well with the hanging holes. You can purchase bear claw screws from a local or online hardware store.

Fasten onto a wall

1. Peel off the drill template sticker, and stick it onto the wall in a desired location.
2. Use the template to mark and drill the pilot holes.
3. Insert the anchors into the holes.
4. Snap off the plastic cover over the LEDs on the front to reveal the long screw holes.
5. Insert the long screws through the device from front to back.
6. Insert the long screws into the anchors on the wall and tighten.
7. Replace the cover over the LEDs on the front. Refer to the illustrations on the next page.



Cautions and Warnings

Environmental specifications

Ambient operating temperature: 0°C to 40°C

Refer to specific Product Model Data Sheet for Environmental Specifications (Operating Temperature, Storage Temperature, Humidity, and Altitude)

Référez à la Fiche Technique de ce produit pour les caractéristiques environnementales (Température de fonctionnement, température de stockage, humidité et l'altitude).

Safety

Caution: This equipment is to be used in a Network Environment 0 per IECTR 62101. This product is connected only to PoE networks without routing to the outside plant.

Attention: Ce matériel doit être utilisé dans un Environnement Réseau 0 par IECTR 62101. Ce produit est uniquement connecté aux réseaux PoE sans installation externe de routage.

This product is intended to be supplied by a Listed Direct Plug-In Power Unit marked LPS or Class 2 and rated 12VDC, 2A or by 54 VDC from PoE source.

Le produit doit être alimenté par un bloc d'alimentation à courant continu homologué UL de 12VDC, 2A nominal marqué LPS ou Class 2 ou par une source d'alimentation par Ethernet de 54 VDC (PoE).

Regulatory Notices

Federal Communication Commission (FCC)—USA

This device complies with Part 15 of FCC Rules. Operation is subject to the following two conditions:

1. This device may not cause harmful interference, and
2. This device must accept any interference received, including interference that may cause undesired operation.

This equipment has been tested and found to comply with the limits for a Class B digital device, pursuant to Part 15 of the FCC Rules. These limits are designed to provide reasonable protection against harmful interference in residential installation. This equipment generates, uses, and can radiate radio frequency energy, and if it is not installed and used in accordance with the instruction manual, it may cause harmful interference to radio communications. However, there is no guarantee that interference will not occur in a particular installation.

If this equipment does cause harmful interference to radio or television reception, which can be determined by turning the equipment off and on, the user is encouraged to try to correct the interference by one or more of the following measures:

- Reorient or relocate the receiving antenna.
- Increase the separation between the equipment and receiver.
- Connect the equipment into an outlet on a circuit different from that to which the receiver is connected.
- Consult the dealer or an experienced radio/TV technician for help.

WARNING: Any changes or modifications to this unit not expressly approved by the party responsible for compliance could void the user's authority to operate the equipment

This equipment complies with FCC radiation exposure limits set forth for an uncontrolled environment. This equipment should be installed and operated with minimum distance 20cm between the radiator and your body. This transmitter must not be co-located or operating in conjunction with any other antenna or transmitter.

Industry Canada Equipment Standard for Digital Equipment (ICES)—Canada

This Class B digital apparatus complies with Canadian ICES-003.

Cet appareil numérique de la classe B est conforme à la norme NMB-003 du Canada.

Innovation, Science and Economic Development (ISED)—Canada

This device contains licence-exempt transmitter(s)/receiver(s) that comply with Innovation, Science and Economic Development Canada's licence-exempt RSS(s). Operation is subject to the following two conditions:

1. This device may not cause interference.
2. This device must accept any interference, including interference that may cause undesired operation of the device.

L'émetteur/récepteur exempt de licence contenu dans le présent appareil est conforme aux CNR d'Innovation, Sciences et Développement économique Canada applicables aux appareils radio exempts de licence. L'exploitation est autorisée aux deux conditions suivantes:

1. L'appareil ne doit pas produire de brouillage;
2. L'appareil doit accepter tout brouillage radioélectrique subi, même si le brouillage est susceptible d'en compromettre le fonctionnement.

This equipment complies with ISED radiation exposure limits set forth for an uncontrolled environment. This equipment should be installed and operated with minimum distance 20cm between the radiator & your body.

Cet équipement est conforme aux limites d'exposition aux rayonnements ISED établies pour un environnement non contrôlé. Cet équipement doit être installé et utilisé avec un minimum de 20cm de distance entre la source de rayonnement et votre corps.

This radio transmitter operates with the antenna types listed below with the maximum permissible gain and required antenna impedance for each antenna type indicated. Antenna types not included in this list, having a gain greater than the maximum gain indicated for that type, are strictly prohibited for use with this device.

Le présent émetteur radio pour fonctionner avec les types d'antenne énumérés ci-dessous et ayant un gain admissible maximal et l'impédance requise pour chaque type d'antenne. Les types d'antenne non inclus dans cette liste, ou dont le gain est supérieur au gain maximal indiqué, sont strictement interdits pour l'exploitation de l'émetteur.

This device and its antennas(s) must not be co-located or operating in conjunction with any other antenna or transmitter except in accordance with IC multi-transmitter product procedures.

Cet appareil et son antenne (s) ne doit pas être co-localisés ou fonctionnement en association avec une autre antenne ou transmetteur.

Antenna Type	Connector	Antenna Gain (dBi)	Remark
Dipole	SMA	617—960 MHz: 1.64 1447—1510 MHz: 1.92 1560—1609 MHz: 2.27 1710—2690 MHz: 3.80 3550—3700 MHz: -0.94 3700—4200 MHz: 3.35 4400—5000 MHz: 3.63 5150—5850 MHz: 4.94 5925—7150 MHz: 4.80	WWAN

European Conformity (CE)—EU

This is a Class B product. In a domestic environment, this product may cause radio interference, in which case the user may be required to take adequate measures.



This equipment should be installed and operated with minimum distance 20cm between the radiator & your body.

Simplified EU Declaration of Conformity

This declaration is only valid for Fortinet products (including combinations of software, firmware and hardware) provided by Fortinet or Fortinet's authorized partners to the end-customer directly for use within the EU or countries that have implemented the EU Directives and/or spectrum regulation. Any Fortinet products not obtained directly from Fortinet or Fortinet's authorized partners may not comply with EU Directives and Fortinet makes no assurances for such products.

Български
Този продукт е в съответствие с Директива 2014/53/ЕС.

Česky
Tento produkt je v souladu se směrnicí 2014/53/EU.

Dansk
Dette produkt er i overensstemmelse med direktiv 2014/53/EU.

Deutsch
Dieses Produkt entspricht der Richtlinie 2014/53/EU.

Eesti
See toode vastab direktiivile 2014/53/EL.

English
This product is in compliance with Directive 2014/53/EU.

Español
Este producto cumple con la Directiva 2014/53/UE.

Ελληνική
Το προϊόν αυτό συμμορφώνεται με την Οδηγία 2014/53/ΕΕ.

Français
Ce produit est conforme à la Directive 2014/53/UE.

Hrvatski
Ovaj proizvod je u skladu s Direktivom 2014/53/EU.

Italiano
Questo prodotto è conforme alla Direttiva 2014/53/UE.

Latviski
Šis produkts atbilst 2014/53/EU Direktīvai.

Lietuvių

Šis gaminytis atitinka direktyvą 2014/53/ES.

Malti
Dan il-prodott huwa konformi mad-Direttiva 2014/53/UE.

Magyar
Ez a termék megfelel a 2014/53/EU irányelvnek.

Nederlands
Dit product is in overeenstemming met Richtlijn 2014/53/EU.

Norsk
Dette produktet er i samsvar med direktiv 2014/53/EU.

Polski
Ten produkt jest zgodny z dyrektywą 2014/53/UE.

Português
Este produto está em conformidade com a Diretiva 2014/53/UE.

Rumunski
Acest produs este în conformitate cu Directiva 2014/53/UE.

Slovensky
Tento produkt je v súlade so smernicou 2014/53/EÚ.

Slovensko
Ta izdelek je v skladu z Direktivo 2014/53/EU.

Suomi
Tämä tuote on direktiivin 2014/53/EU mukainen.

Svenska
Denna produkt överensstämmer med direktiv 2014/53/EU.

Note: The full declaration of conformity for this product is available at the link below:
<https://site.fortinet.com/ProductRegulatory/EU>

Compliance with 2014/53/EU Radio Equipment Directive (RED)

In accordance with Article 10.8(a) and 10.8(b) of the RED, the following table provides information on the frequency bands used and the maximum RF transmit power of the product for sale in the EU:

Radio	Frequency Range	Maximum Transmit Power
WCDMA	Band 1: 1920—1980 MHz (Uplink); 2110—2170 MHz (Downlink) Band 3: 1710—1785 MHz (Uplink); 1805—1880 MHz (Downlink) Band 8: 880—915 MHz (Uplink); 925—960 MHz (Downlink)	25.7 dBm (Conducted)
LTE	Band 1: 1920—1980 MHz (Uplink); 2110—2170 MHz (Downlink) Band 3: 1710—1785 MHz (Uplink); 1805—1880 MHz (Downlink) Band 7: 2500—2570 MHz (Uplink); 2620—2690 MHz (Downlink) Band 8: 880—915 MHz (Uplink); 925—960 MHz (Downlink) Band 20: 832—862 MHz (Uplink); 791—821 MHz (Downlink) Band 28: 703—748 MHz (Uplink); 758—803 MHz (Downlink) Band 32: 1452—1496 MHz (Downlink) Band 38: 2570—2620 MHz (Uplink); 2570—2620 MHz (Downlink) Band 40: 2300—2400 MHz (Uplink); 2300—2400 MHz (Downlink)	25.7 dBm (Conducted)

UK Conformity Assessed (UKCA) – United Kingdom

The product transmits within the frequency ranges and less than or equal to the power listed below:

Standard	Frequency Range	Maximum Transmit Power
WCDMA	Band 1: 1920—1980 MHz (Uplink); 2110—2170 MHz (Downlink) Band 3: 1710—1785 MHz (Uplink); 1805—1880 MHz (Downlink) Band 8: 880—915 MHz (Uplink); 925—960 MHz (Downlink)	25.7dBm (Conducted)
LTE	Band 1: 1920—1980 MHz (Uplink); 2110—2170 MHz (Downlink) Band 3: 1710—1785 MHz (Uplink); 1805—1880 MHz (Downlink) Band 7: 2500—2570 MHz (Uplink); 2620—2690 MHz (Downlink) Band 8: 880—915 MHz (Uplink); 925—960 MHz (Downlink) Band 20: 832—862 MHz (Uplink); 791—821 MHz (Downlink) Band 28: 703—748 MHz (Uplink); 758—803 MHz (Downlink) Band 32: 1452—1496 MHz (Downlink) Band 38: 2570—2620 MHz (Uplink); 2570—2620 MHz (Downlink) Band 40: 2300—2400 MHz (Uplink); 2300—2400 MHz (Downlink)	25.7dBm (Conducted)

This equipment should be installed and operated with minimum distance 20cm between the radiator & your body.

This product is in compliance with Statutory Instrument 1206 Radio Equipment Regulations 2017

The full Declaration of Conformity for this product is available at the link below:
<https://site.fortinet.com/ProductRegulatory/UK>

Product License Agreement/EULA and Warranty Terms

Visit: <https://www.fortinet.com/content/dam/fortinet/assets/legal/EULA.pdf>

Fortinet Customer Service & Support

Create a support account, register and manage your products, download updates, firmware images and release notes, and create technical support tickets.

<https://support.fortinet.com>

Fortinet Document Library

Up-to-date versions of Fortinet publications for the entire family of Fortinet products.

<https://docs.fortinet.com>

Training Services

Course descriptions, availability, schedules, and location of training programs in your area.

<https://training.fortinet.com>

Technical Discussion Forums

Communicate with other customers and Fortinet partners about Fortinet products, services, and configuration issues.

<https://forum.fortinet.com>

FortiGuard Threat Research and Response

Up-to-date information on vulnerabilities and threats, includes a virus scanner, IP signature look-up, and web filtering tools.

<https://fortiguard.com>

Fortinet.com