

# Release Notes

FortiLAN Cloud 23.3



**FORTINET DOCUMENT LIBRARY**

<https://docs.fortinet.com>

**FORTINET VIDEO GUIDE**

<https://video.fortinet.com>

**FORTINET BLOG**

<https://blog.fortinet.com>

**CUSTOMER SERVICE & SUPPORT**

<https://support.fortinet.com>

**FORTINET TRAINING & CERTIFICATION PROGRAM**

<https://www.fortinet.com/support-and-training/training.html>

**NSE INSTITUTE**

<https://training.fortinet.com>

**FORTIGUARD CENTER**

<https://fortiguard.com/>

**END USER LICENSE AGREEMENT**

<https://www.fortinet.com/doc/legal/EULA.pdf>

**FEEDBACK**

Email: [techdoc@fortinet.com](mailto:techdoc@fortinet.com)

September 16, 2023

FortiLAN Cloud 23.3 Release Notes

53-233-567862-20230916

# TABLE OF CONTENTS

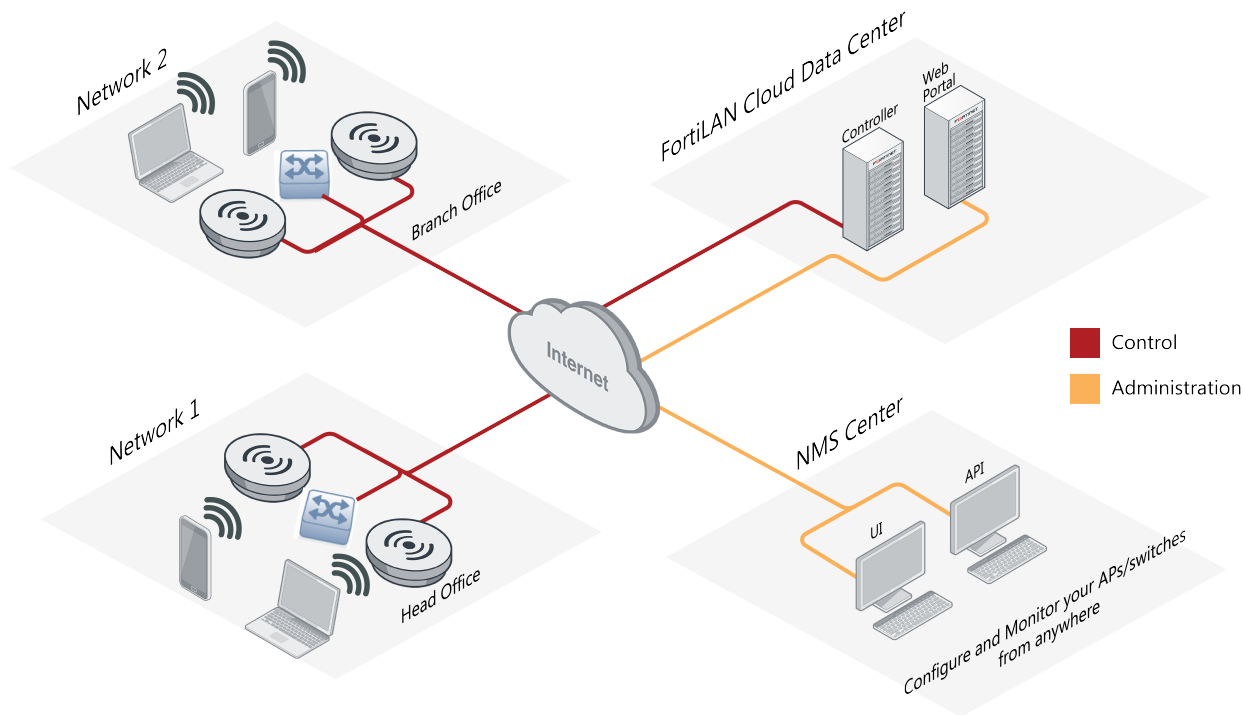
<b>Change log</b> .....	<b>4</b>
<b>Introduction</b> .....	<b>5</b>
<b>Product integration and support</b> .....	<b>6</b>
<b>New Features</b> .....	<b>7</b>
<b>Additional Notes</b> .....	<b>9</b>
<b>Resolved issues</b> .....	<b>10</b>
<b>Known issues</b> .....	<b>11</b>

## Change log

Date	Change description
2023-09-16	FortiLAN Cloud 23.3 release version.

# Introduction

FortiLAN Cloud is a unified management platform for standalone FortiAP and FortiSwitch deployments. FortiLAN Cloud provides configuration management and monitoring control for a handful of devices and can scale up to thousands of devices across multiple sites.



This document provides a list of new features, product integration information, resolved issues, and known issues for FortiLAN Cloud version 23.3. Review all sections of this document before you use this service.

## Product integration and support

The following table lists supported web browsers for FortiLAN Cloud version 23.3. Other web browsers may work correctly but Fortinet does not support them.

Item	Supported version
Windows OS	<ul style="list-style-type: none"><li>• Microsoft Edge version - 102.0.1245.41</li><li>• Mozilla Firefox version - 101.0.1</li><li>• Google Chrome version - 102.0.5005.115</li></ul>
MacOS	<ul style="list-style-type: none"><li>• Apple Safari version - 14.1.2</li></ul>

The following table lists FortiLAN Cloud language support information. Language settings are determined by region.

Language	GUI	Documentation
English	x	x
Japanese	x	—
Spanish	x	—
Portuguese	x	—

# New Features

FortiLAN Cloud 23.3 delivers the following features/enhancements to FortiLAN Cloud. For more information, see [New Features](#).

- [FortiLAN Cloud](#)
- [Wireless](#)
- [Switch](#)

## FortiLAN Cloud

These are the new features/enhancements for FortiLAN Cloud.

Feature	Description
<b>Migrate legacy FortiLAN Cloud users to FortiCloud IAM</b>	This release allows you to migrate the existing email users into IAM users. The email users are now marked legacy and are planned to be deprecated in the forthcoming releases of FortiLAN Cloud.
<b>FortiCloud Organization</b>	FortiCloud supports a centralized account management feature called <i>FortiCloud Organization</i> that consolidates multiple FortiCloud accounts into <b>Organization (O)</b> or <b>Organizational Units (OU)</b> .
<b>Language Support</b>	This release of FortiLAN Cloud supports the user interface in <i>Spanish</i> and <i>Portuguese</i> , in addition to the existing support for <i>English</i> and <i>Japanese</i> languages.
<b>REST API Support - Federated Configurations</b>	REST API support is now available for <i>Federated Configurations</i> .
<b>Federated Client Query</b>	You can now query multiple existing networks for client data from the <b>Devices &gt; Deployed Devices</b> page.

## Wireless

These are the new features/enhancements for FortiAPs.

Feature	Description
<b>6GHz Band Support</b>	With this release, the 6GHz band is supported for the G series access points.
<b>Energy Efficient Ethernet Support</b>	FortiAP profiles now support the <b>Energy Efficient Ethernet</b> feature.
<b>UNII4 5Ghz Band (G series) Support</b>	FortiAP profiles support UNII-4 5GHz bands for FortiAP G-series models.

Feature	Description
<b>802.11d Support</b>	FortiAP profiles support the 802.11d wireless networking standard that allows Wi-Fi devices to dynamically adjust their settings based on the regulatory domain in which they are operating.
<b>SSID Enhancements</b>	<ul style="list-style-type: none"> <li>• Mesh deployment is supported for WPA3 - SAE.</li> <li>• The <b>WPA3 - Enterprise Only</b> and <b>WPA3 - Enterprise Transition</b> authentication modes are now supported.</li> </ul>
<b>Miracast Support</b>	The <b>Bonjour Services</b> feature now supports Miracast, a wireless projection feature by which a video stream from a source device (laptops/smart phones) is carried over a WiFi network to a display device.
<b>Wireless Log Enhancement</b>	A new field <b>Subtype</b> is added to the wireless logs.
<b>Network Security Dashboard</b>	This dashboard now provides data for the top applications and botnets.
<b>Additional Client Statistics</b>	Additional wireless client statistics are now displayed in the <b>Monitor &gt; Clients</b> dashboard.

## Switch

Routing configuration support is added for FortiSwitches.

Feature	Description
<b>FSW-6xxF Series Support</b>	FortiLAN Cloud now supports the following new FortiSwitch models. <ul style="list-style-type: none"> <li>• FSW-624F</li> <li>• FSW-624F-POE</li> <li>• FSW-648F</li> <li>• FSW-648F-FPOE</li> </ul>
<b>FortiSwitch Configuration Synchronization</b>	FortiLAN Cloud now provides the <b>Re-sync on re-connect</b> option to ensure that the ZTC template configuration is applied to the FortiSwitch, each time it re-connects to FortiLAN Cloud.
<b>GUI Look-and-Feel - FortiSwitch</b>	Some of the FortiSwitch pages are migrated to a new look user interface to align with the rest of the GUI.

## Additional Notes

Note the following while using FortiLAN Cloud.

- For swifter GUI and API responses, Fortinet recommends deploying a total of less than 2000 switches and FortiAPs in a network. Also, the number of switch ports should be less than 15000.
- The upgrade process completion takes approximately 30 minutes if you try to upgrade multiple FortiAPs (count in 3 digits or more) simultaneously.

## Resolved issues

The following issues have been resolved in FortiLAN Cloud version 23.3. For inquiries about a particular issue, visit the [Fortinet Support](#) website.

The following issues are resolved in **FortiLAN Cloud**.

Issue ID	Description
918980	GUI response time improvements.

The following issues are resolved in **Wireless** (FortiAP).

Issue ID	Description
678842	[Spectrum Analysis] Unable to select the 5 GHz band on the 3rd radio of FAP-431F.
880249	Sometimes the SSID configurations were not pushed to the FortiAP.
933041	The GUI and the CLI displayed different values for data on FortiAP neighbors.
938896	The operating channel displayed a value of 0 in the FortiAP status and edit GUI pages.
945882	Random FortiAP crashes with Kernel panic error.

## Known issues

The following issues have been identified in FortiLAN Cloud version 23.3. For inquiries about a particular issue, or to report an issue, visit the [Fortinet Support](#) website.

The following known issues are found in **FortiLAN Cloud**.

Issue ID	Description
832213	You can apply the pool license to a maximum of 3 devices only.
846593	When deploying FortiAPs in bulk (> 100), the GUI takes longer (approximately 2 minutes) to load the data.
932051	The REST APIs for federated configuration templates do not work accurately.

The following known issues are found in **Wireless** (FortiAPs).

Issue ID	Description
857725	Accurate configuration data is not pushed to the FortiAPs when the SSID is configured with the following. <ul style="list-style-type: none"> <li>• <i>WPA3 Enterprise</i> authentication mode</li> <li>• <i>FortiLAN Cloud User/Group</i> for RADIUS authentication</li> </ul>
935485	The captive portal does not work when the SSID is configured with WPA2 PSK as the authentication mode and FortiAP as the RADIUS client.

The following known issues are found in **Switch** (FortiSwitches).

Issue ID	Description
910686	Sometimes, the FortiSwitch status displays inconsistent data.
931598	When configuring CLI commands in the ZTC configuration, pressing <i>Enter</i> does not start a new line, instead it saves the configuration.
946889	The ZTC GUI LLDP profile is not pushed to the FortiSwitch if the <b>Automatic Inter-Switch LAG</b> is disabled.
950865	Some fields are not updated in the FortiSwitch diagnostics page after a 5-10 minute interval post deployment.

