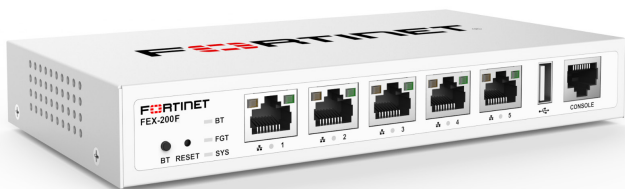


FORTINET®



FortiExtender 200F

QuickStart Guide

Register for Support

Register your Fortinet product to receive:

- Technical Support
- New product features
- Protection from new threats

Vous devez enregistrer le produit pour recevoir:

- Support technique
- Nouvelles fonctionnalités du produit
- Protection contre de nouvelles menaces

La reistrazione ti permette di usufruire di:

- Supporto Tecnico
- Nuove funzionalita
- Protezione dalle ultime minacce

Debe registrar el producto para recibir:

- Apoyo técnico
- Nuevas funcionalidades del producto
- Protección contra ataques

登録のお願い

本日、フォーティネット製品の登録をしてください。

登録すると次のメリットがあります。
テクニカルサポート・新機能の追加・新しい脅威への防御

请马上注册

您的飞塔产品

您在注册以后才能得到技术支持、新产品特点信息、最新威胁防护

<https://support.fortinet.com>

Toll free: 1 866 648 4638

Phone: 1 408 486 7899

Fax: 1 408 235 7737

Email: register@fortinet.com



March 11, 2024

Copyright © 2020–2024 Fortinet, Inc. All rights reserved. Fortinet®, FortiGate®, FortiCare® and FortiGuard®, and certain other marks are registered trademarks of Fortinet, Inc., in the U.S. and other jurisdictions, and other Fortinet names herein may also be registered and/or common law trademarks of Fortinet. All other product or company names may be trademarks of their respective owners. Performance and other metrics contained herein were attained in internal lab tests under ideal conditions, and actual performance and other results may vary. Network variables, different network environments and other conditions may affect performance results. Nothing herein represents any binding commitment by Fortinet, and Fortinet disclaims all warranties, whether express or implied, except to the extent Fortinet enters a binding written contract, signed by Fortinet's General Counsel, with a purchaser that expressly warrants that the identified product will perform according to certain expressly-identified performance metrics and, in such event, only the specific performance metrics expressly identified in such binding written contract shall be binding on Fortinet. For absolute clarity, any such warranty will be limited to performance in the same ideal conditions as in Fortinet's internal lab tests. In no event does Fortinet make any commitment related to future deliverables, features or development, and circumstances may change such that any forward-looking statements herein are not accurate. Fortinet disclaims in full any covenants, representations, and guarantees pursuant hereto, whether express or implied. Fortinet reserves the right to change, modify, transfer, or otherwise revise this publication without notice, and the most current version of the publication shall be applicable.

Packing List

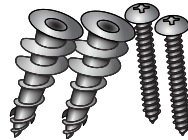
FortiExtender 200F



QuickStart Guide



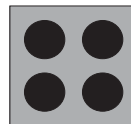
12V/1A Power Adapter



Anchors and Screws



Power Adapter Plug Tips
(US/EU)



Rubber Feet



Wall-mount Ears



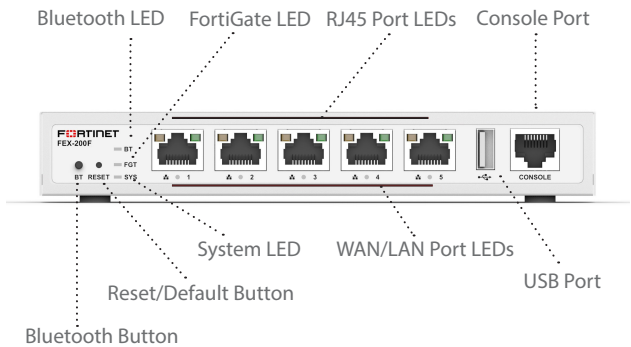
Wall-mount Ear Screws

Product Description

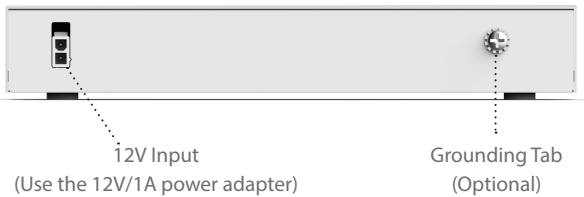
FortiExtender 200F is a data terminal device to serves as an extension of the FortiGate LAN interface, which connects to the central FortiGate through a secured L-2 tunnel, to apply central Layer-2 through Layer-7 security solutions for small branch and remote offices.

It features five GbE RJ-45 ports, each of which can be independently configured as a WAN or LAN port using the software.

Ports, LEDs, and Buttons



Power Input



Operation Status LEDs

| LED | Behavior and Description |
|-----------------|--|
| SYS (System) | <ul style="list-style-type: none">Off—No power.Green—In normal operation; flashing when booting up.Amber—Error/warning. |
| FGT (FortiGate) | <ul style="list-style-type: none">Green Steady—Connected to central FortiGate.Green Flashing—Connecting to central FortiGate.Amber Steady—Failed to connect to central FortiGate.Off—Not connected to central FortiGate (No attempt has been made yet). |
| BT (Bluetooth) | <ul style="list-style-type: none">Green Steady—The Bluetooth configuration window is open, waiting for pairing and Bluetooth system configuration.Blue Flashing—Bluetooth configuration is in progress.Blue Steady—Bluetooth configuration is completed. The LED will turn off in 5 seconds. |

WAN/LAN Port LEDs

| Port | Behavior and Description |
|------|--|
| 1 | <ul style="list-style-type: none">On—Port 1 configured as WAN port.Off—Port 1 configured as LAN port. |
| 2 | <ul style="list-style-type: none">On—Port 2 configured as WAN port.Off—Port 2 configured as LAN port. |
| 3 | <ul style="list-style-type: none">On—Port 3 configured as WAN port.Off—Port 3 configured as LAN port. |
| 4 | <ul style="list-style-type: none">On—Port 4 configured as WAN port.Off—Port 4 configured as LAN port. |
| 5 | <ul style="list-style-type: none">On—Port 5 configured as WAN port.Off—Port 5 configured as LAN port. |

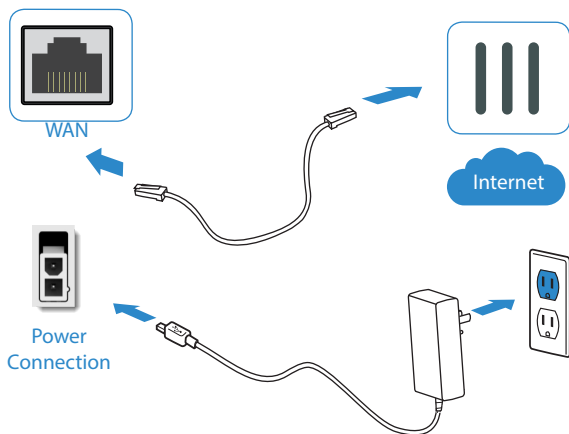
RJ-45 Ports LEDs

| Port | Behavior and Description |
|------|---|
| 1 | <ul style="list-style-type: none">• Green Steady—1000M network connected.• Green Flashing—1000M network activity.• Amber Steady—100M network connected.• Amber Flashing—100M network activity.• OFF—No network connected. |
| 2 | <ul style="list-style-type: none">• Green Steady—1000M network connected.• Green Flashing—1000M network activity.• Amber Steady—100M network connected.• Amber Flashing—100M network activity.• OFF—No network connected. |
| 3 | <ul style="list-style-type: none">• Green Steady—1000M network connected.• Green Flashing—1000M network activity.• Amber Steady—100M network connected.• Amber Flashing—100M network activity.• OFF—No network connected. |
| 4 | <ul style="list-style-type: none">• Green Steady—1000M network connected.• Green Flashing—1000M network activity.• Amber Steady—100M network connected.• Amber Flashing—100M network activity.• OFF—No network connected. |
| 5 | <ul style="list-style-type: none">• Green Steady—1000M network connected.• Green Flashing—1000M network activity.• Amber Steady—100M network connected.• Amber Flashing—100M network activity.• OFF—No network connected. |

RESET and BT (Bluetooth) Buttons

| Button | Operating Instructions |
|----------------------|--|
| Reset/Default Button | <ul style="list-style-type: none">• Press and hold for 5 seconds or less: Reboot the system.• Press and hold for more than 5 seconds: Restore the device to its factory default settings. |
| BT | <ul style="list-style-type: none">• Press and hold for 5 seconds or less: Ignored.• Press and hold for more than 5 seconds: Set the system to Bluetooth pairing mode for system configuration with Bluetooth. |

1 Basic Connections



2 IP Configuration

After you have connected the FEX-200F network interfaces, the device automatically attempts to obtain an IP address from a DHCP server.

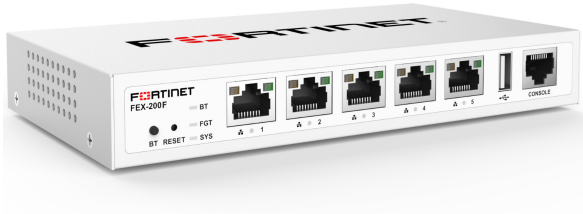
If you do not use DHCP, you can configure a static IP address.
To configure a static IP address:

1. Use an Ethernet cable to connect one of the LAN ports in the back of the FEX-200F to the Ethernet port of your computer.
2. Configure the computer to be on the same subnet as the FEX-200F by changing its IP address to 192.168.200.100 and the netmask to 255.255.255.0.
3. Open your web browser and point to the default FEX-200F web GUI address: <http://192.168.200.99>
4. In both the username and password fields, type admin and press Enter.
5. Go to Network Configuration.
6. For address mode, select **Static**.
7. Specify the IP address, netmask, and gateway; and then click **APPLY**.

3 Installation

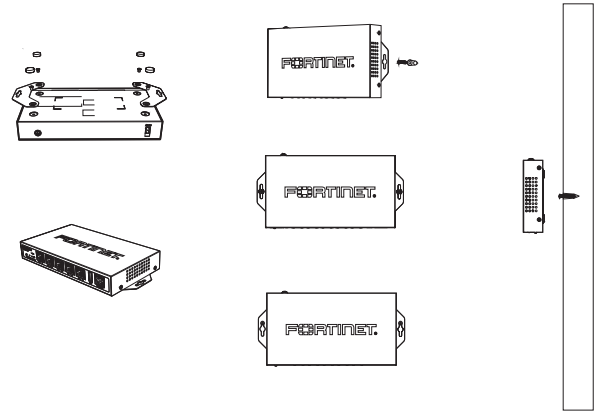
Place on top of a desk or flat surface

1. Attach the rubber feet to the four corners on the bottom of the unit.
2. Place the unit on a desk or flat surface.



Hang on a wall

1. Attach the hanging ears to the bottom of the unit.
2. Position the device on an ideal location on the wall, and mark and drill the pilot holes.
3. Insert the anchors into the holes.
4. Insert the screws into the anchors and tighten.



Cautions and Warnings

Environmental specifications

Ambient operating temperature: 0°C to 40°C

Refer to specific Product Model Data Sheet for Environmental Specifications (Operating Temperature, Storage Temperature, Humidity, and Altitude)

Référez à la Fiche Technique de ce produit pour les caractéristiques environnementales (Température de fonctionnement, température de stockage, humidité et l'altitude).

This product is intended to be supplied by a Listed pluggable A via Class I external power supply adapter by means of a power cord connected to a socket-outlet with earthing connection.

Ce produit est destiné à être alimenté par un adaptateur d'alimentation externe de classe I par l'intermédiaire d'un cordon d'alimentation enfichable de classe A qui doit être branché à une prise de courant avec terre.

Regulatory Notices

Federal Communication Commission (FCC) – USA

This device complies with Part 15 of FCC Rules. Operation is subject to the following two conditions:

- (1) this device may not cause harmful interference, and
- (2) this device must accept any interference received; including interference that may cause undesired operation.

This equipment has been tested and found to comply with the limits for a Class B digital device, pursuant to Part 15 of the FCC Rules. These limits are designed to provide reasonable protection against harmful interference in residential installation. This equipment generates, uses, and can radiate radio frequency energy, and if it is not installed and used in accordance with the instruction manual, it may cause harmful interference to radio communications. However, there is no guarantee that interference will not occur in a particular installation.

If this equipment does cause harmful interference to radio or television reception, which can be determined by turning the equipment off and on, the user is encouraged to try to correct the interference by one or more of the following measures:

Reorient or relocate the receiving antenna.

Increase the separation between the equipment and receiver.

Connect the equipment into an outlet on a circuit different from that to which the receiver

is connected.

Consult the dealer or an experienced radio/TV technician for help.

WARNING: Any changes or modifications to this unit not expressly approved by the party responsible for compliance could void the user's authority to operate the equipment

This equipment complies with FCC radiation exposure limits set forth for an uncontrolled environment. This equipment should be installed and operated with minimum distance 20 cm between the radiator and your body. This transmitter must not be co-located or operating in conjunction with any other antenna or transmitter.

Industry Canada Equipment Standard for Digital Equipment (ICES) – Canada

This Class B digital apparatus complies with Canadian ICES-003.

Cet appareil numérique de la classe B est conforme à la norme NMB-003 du Canada.

Innovation, Science and Economic Development (ISED) – Canada

This device contains licence-exempt transmitter(s)/receiver(s) that comply with Innovation, Science and Economic Development Canada's licence-exempt RSS(s). Operation is subject to the following two conditions:

1. This device may not cause interference.
2. This device must accept any interference, including interference that may cause undesired operation of the device.

L'émetteur/récepteur exempt de licence contenu dans le présent appareil est conforme aux CNR d'Innovation, Sciences et Développement économique Canada applicables aux appareils radio exempts de licence.

L'exploitation est autorisée aux deux conditions suivantes:

1. L'appareil ne doit pas produire de brouillage;
2. L'appareil doit accepter tout brouillage radioélectrique subi, même si le brouillage est susceptible d'en compromettre le fonctionnement.

This equipment complies with ISED radiation exposure limits set forth for an uncontrolled environment. This equipment should be installed and operated with minimum distance 20 cm between the radiator & your body.

Cet équipement est conforme aux limites d'exposition aux rayonnements ISED établies pour un environnement non contrôlé. Cet équipement doit être installé et utilisé avec un minimum de 20 cm de distance entre la source de rayonnement et votre corps.

| Antenna | Quantity | Antenna Type | Gain (dBi) 2.4 GHz |
|------------------|----------|--------------|--------------------|
| BT (Internal) | 1 | PIFA | 2.38 |

European Conformity (CE) – EU

This is a Class B product. In a domestic environment, this product may cause radio interference, in which case the user may be required to take adequate measures.



The product transmits within the frequency ranges and less than or equal to the power listed below:

2402-2480MHz less than 20dBm

Simplified EU Declaration of Conformity

This declaration is only valid for Fortinet products (including combinations of software, firmware and hardware) provided by Fortinet or Fortinet's authorized partners to the end-customer directly for use within the EU or countries that have implemented the EU Directives and/or spectrum regulation. Any Fortinet products not obtained directly from Fortinet or Fortinet's authorized partners may not comply with EU Directives and Fortinet makes no assurances for such products.

Български
Този продукт е в съответствие с Директива 2014/53/ЕС.

Česky
Tento produkt je v souladu se směrnicí 2014/53/EU.

Dansk
Dette produkt er i overensstemmelse med direktiv 2014/53/EU.

Deutsch
Dieses Produkt entspricht der Richtlinie 2014/53/EU.

Eesti
See toode vastab direktiivile 2014/53/EL.

English
This product is in compliance with Directive 2014/53/EU.

Español
Este producto cumple con la Directiva 2014/53/UE.

Ελληνική
Το προϊόν αυτό συμμορφώνεται με την Οδηγία 2014/53/ΕΕ.

Français
Ce produit est conforme à la Directive 2014/53/UE.

Hrvatski
Ovaj proizvod je u skladu s Direktivom 2014/53/EU.

Italiano
Questo prodotto è conforme alla Direttiva 2014/53/UE.

Latviski
Šis produkts atbilst 2014/53/EU Direktīvu.

Lietuviai
Šis gaminytis atitinka direktyvą 2014/53/ES.

Malti
Dan il-prodott huwa konformi mad-Direttiva 2014/53/EU.

Magyar
Ez a termék megfelel a 2014/53/EU irányelvnek.

Nederlands
Dit product is in overeenstemming met Richtlijn 2014/53/EU.

Norsk
Dette produktet er i samsvar med direktiv 2014/53/EU.

Polski
Ten produkt jest zgodny z dyrektywą 2014/53/UE.

Português
Este produto está em conformidade com a Diretiva 2014/53/UE.

Rumunski
Acest produs este în conformitate cu Directiva 2014/53/UE.

Slovensky
Tento produkt je v súlade so smernicou 2014/53/EÚ.

Slovensko
Ta izdelek je v skladu z Direktivo 2014/53/EU.

Suomi
Tämä tuote on direktiivin 2014/53/EU mukainen.

Svenska
Denna produkt överensstämmer med direktiv 2014/53/EU.

Note: The full declaration of conformity for this product is available in the link below:
<https://site.fortinet.com/ProductRegulatory/EU>

Agência Nacional de Telecomunicações (ANATEL) – Brazil

Este equipamento não tem direito à proteção contra interferência prejudicial e não pode causar interferência em sistemas devidamente autorizados. www.gov.br/anatel/pt-br/

Para maiores informações, consulte o site da ANATEL www.gov.br/anatel/pt-br/

Product Safety Electrical Appliance & Material (PSE) – Japan
日本では電気用品安全法 (PSE) の規定により、同梱している電源コードは本製品の専用電源コードとして利用し、他の製品に使用しないでください。

Fortinet Customer Service & Support

Create a support account, register and manage your products, download updates, firmware images and release notes, and create technical support tickets.

<https://support.fortinet.com>

Fortinet Document Library

Up-to-date versions of Fortinet publications for the entire family of Fortinet products.

<https://docs.fortinet.com>

Training Services

Course descriptions, availability, schedules, and location of training programs in your area.

<https://training.fortinet.com>

Technical Discussion Forums

Communicate with other customers and Fortinet partners about Fortinet products, services, and configuration issues.

<https://forum.fortinet.com>

FortiGuard Threat Research and Response

Up-to-date information on vulnerabilities and threats, includes a virus scanner, IP signature look-up, and web filtering tools.

<https://fortiguard.com>

Fortinet.com